

EEC – EG Website Manual

Members of the Council will receive a Username and a Password to be able to access all pages of the website and to update their company information which is a very important step as the website will act as a gate to find business matchmaking for your company and products. Note that Username and Passwords are Case sensitive. Once you update your company information with the profile extension data, you can navigate through the whole website, access all pages and generate your own export reports.

When you log in as a member from the left box at the Home Page, the following will appear:



The screenshot shows the website interface for a logged-in member. At the top is a navigation bar with links: HOME, ABOUT, MEMBERSHIP, ACTIVITIES & SERVICES, EXPORT INFO, EGYPT INFO, MEDIA CENTER, LINKS, CONTACT US. The main content area is divided into several sections:

- My Account:** A sidebar menu with options: My Profile, My HS Codes, My Profile Extension, My Subsidy requests, Send New Subsidy, Annual Financial Analysis, BOD Meetings, and a Logout button.
- Chairman Message:** A section featuring a photo of the Chairman and a text message. The message states: "The primary aim of the Council is to support the engineering exporters to increase their exports and comply with the government's export strategy for the Engineering sector in Egypt to meet the target that has been set by the government. The Council has worked hard and managed to get the approval of the government to revise its export rebates scheme and include a large percentage of the engineering products. The rebates were set at 10% for 3 years, declining by 1% per annum over the following 3 years starting July2008." There is a "more" link below the message.
- Export Performance Monitor:** A section with a gear icon and a "more" link.
- Search For:** A search box with a dropdown menu set to "Training" and a "GO" button.
- Latest News:** A section with a globe icon and a news item: "> EEC-EG at Equip Auto Exhibition in Paris".

On the left side you will have:

- **My Profile:** This is contains the Company Data we have collected from you (you can update or modify it, please do). Contact information only for the Company will be viewable for everybody. Other data will be confidential.
- **My HS Codes:** The product HS Codes your company export, select your HS Codes

Membership

Becoming a member

Membership benefits

Membership application

My Account

Welcome FAW

- [My Profile](#)
- [My HS Codes](#)
- [My Profile Extension](#)
- [My Subsidy requests](#)
- [Send New Subsidy](#)
- [Annual Financial Analysis](#)
- [BOD Meetings](#)

[Logout](#)

My H.S. Codes List

Add a new H.S. Code to my list

Note: You can select more than one sector and add your HS Codes

Sector :

HS Codes: select the code to see the description, then click add selection to add it to your list

8408101000	محركات احتراق داخلي ، ذات مكابس يتم اشعال فيها بالضغط
8408209010	محركات ديزل اونصف ديزل لتسيير مراكب بحريه ، ذات قدرت كيلو وات K W حتي
8409910090	
8414301090	
8419500010	محركات احتراق داخلي ، ذات مكابس يتم اشعال فيها بالضغط
8421230000	محركات ديزل اونصف ديزل لتسيير مراكب بحريه ، ذات قدرت كيلو وات K W حتي
8421310000	

Add selection

My current list

There is no selected hs code

- My Profile Extension: Data about the production capacity, future investments and labor number and wages (This is a very important step to support any of our arguments to extend support or add new sectors)
- My Subsidy requests: You can check all your Subsidy Requests you sent online (still not applied yet)
- Send New Subsidy: You can fill in the Subsidy Form online (still not used yet)
- Annual Financial Analysis: We need every company to update information of this section every year. For the first time, you will add the previous years and year 2009. Again this data is essential for the Council to collect from ALL its members. (All Data will be confidential)
- BOD Meetings: The Minutes Meeting will be posted on this section.

Calendar for All Activities, Events and Exhibitions in the Future

Activities Calendar

Search events

Year: Month: [GO](#)

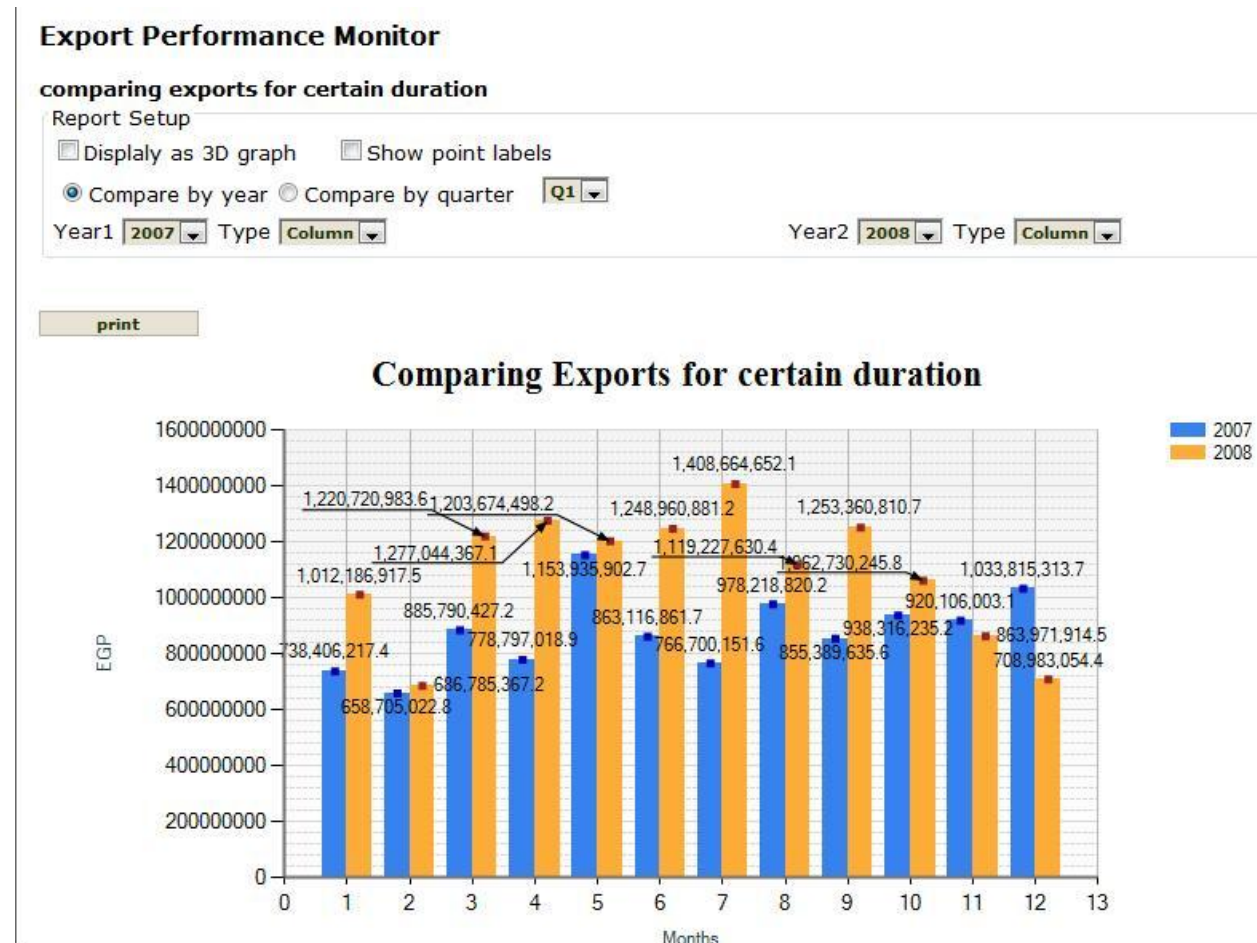
Note: the only years and months listed above which are contains an events

January		February 2010					March
Sun	Mon	Tue	Wed	Thu	Fri	Sat	
31	1	2	3	4	5	6	
7 Cairo ICT 2010	8 Cairo ICT 2010	9 Middle East Electricity	10 Middle East Electricity	11 Middle East Electricity	12 Ambiente	13 Ambiente	
14 Ambiente	15 Ambiente	16 Ambiente	17	18	19	20	
21	22	23	24	25 World of Industry II _ WIN II	26 World of Industry II _ WIN II	27 World of Industry II _ WIN II	
28 World of Industry II _ WIN II	1	2	3	4	5	6	
7	8	9	10	11	12	13	

More details appear when you click on the event you select.

Reports and Graphs Section

You can create your own report and its representation according to the data you like to view. 6 Type of Reports are available. For Example, you have Report One: the Export Performance Monitor, where you can view and compare our exports according to your needs (by year or quarterly), either view it line or column or 3D.



Note in the Reports and Graphs section: Deviations for some figures could be noticed; however, numbers are 90% accurate and can give you good indicators.

Export Performance Monitor

comparing exports for certain duration

Report Setup

Display as 3D graph Show point labels

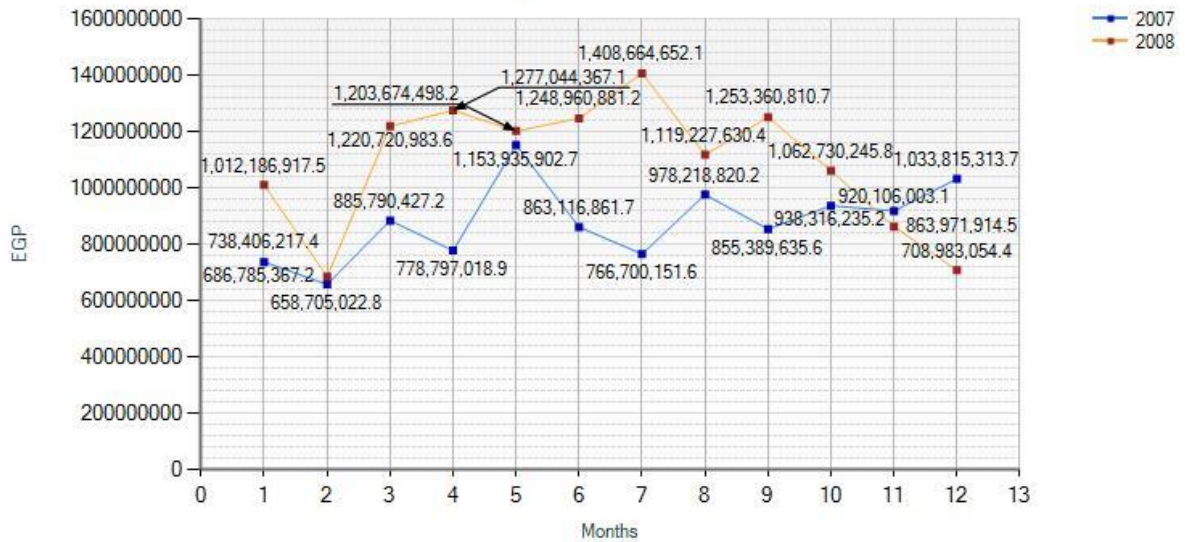
Compare by year Compare by quarter 01

Year1 2007 Type Line

Year2 2008 Type Line

print

Comparing Exports for certain duration



Total exports of years

Report Setup

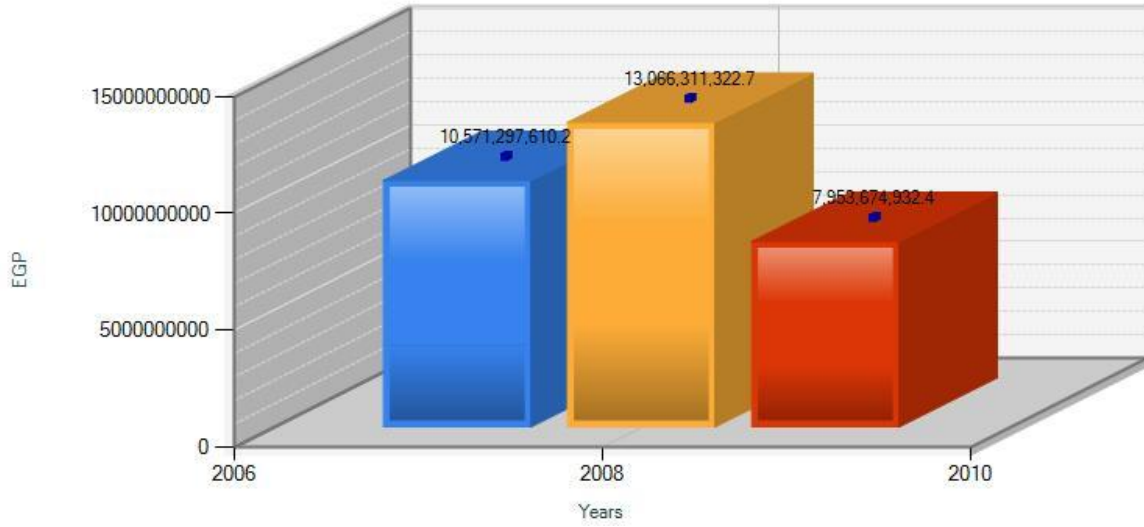
Type **Column**

Display as 3D graph

Show point labels

print

Total Exports



Report Two and Three: Monthly and Yearly Export Figures and Markets. You can pick the HS Code and the Country or you can check all for both. You can also pick certain month or a year. Then click “Generate Report”.

Monthly Export Figures and Markets

Select the month : year

Check all
 401120
 6812930000
 7317009050
 7321190010
 7321190020
 7403110000

Check all
 Albania
 Algeria
 American Samoa
 Andorra
 Angola
 Argentina

1 of 19 100% Find | Next Select a format Export

Monthly Export Figures and Markets

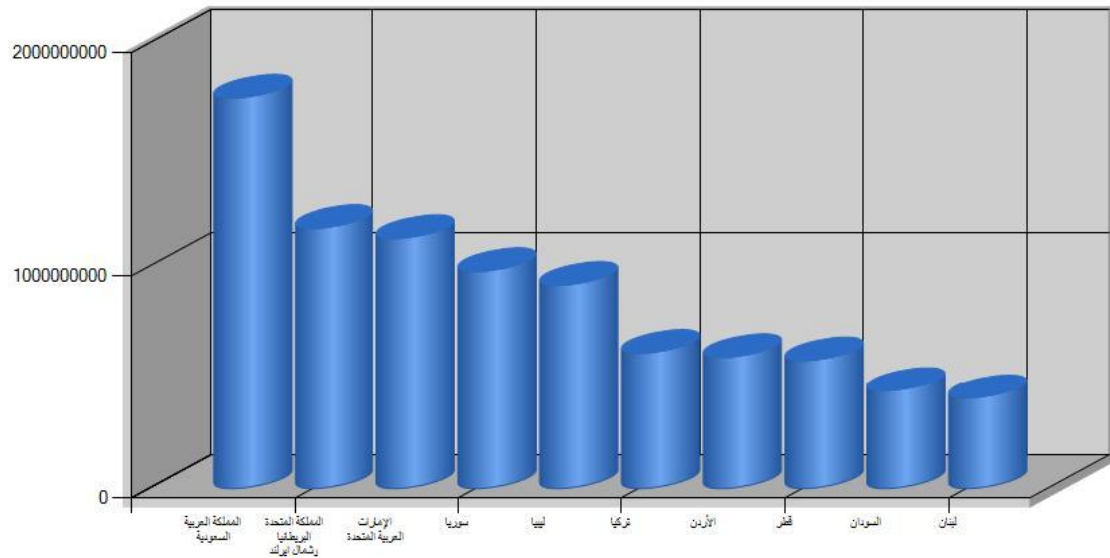
HS Code	HS Code Description	Total (EGP)
Country: المملكة العربية السعودية		202119112.26
8544209090	كابلات اخر منجده مجور وغيرها من موصلات كهربائيت منجده مجور	55371561.78
8702900020	سيارات بخلاف سيارات سياحت معدت لنقل عشرين اشخاص او اكثر بما فيهم سائق ، مجهزة بمحركات احتراق داخلي ذات مكابس يتم اشغال فيها بغيرالضغط ، وحدات كاملت	26254616.00
8703210000	سيارات ركوب اخر،مجهزة بمحركات احتراق داخلي	23052000.00

You can also export the results to pdf or excel sheet.

Also you can have a graphical representation for the top 10 Cs where they always represent 70% of our exports.

print

Top Countries and total export figures for year 2008



Report 4 and Report 5 will be soon complete which are for the Yearly and Monthly Export Rebate Program Figures.

Report 6: Exports by Sectors

Exports by Sectors

Year

Table View

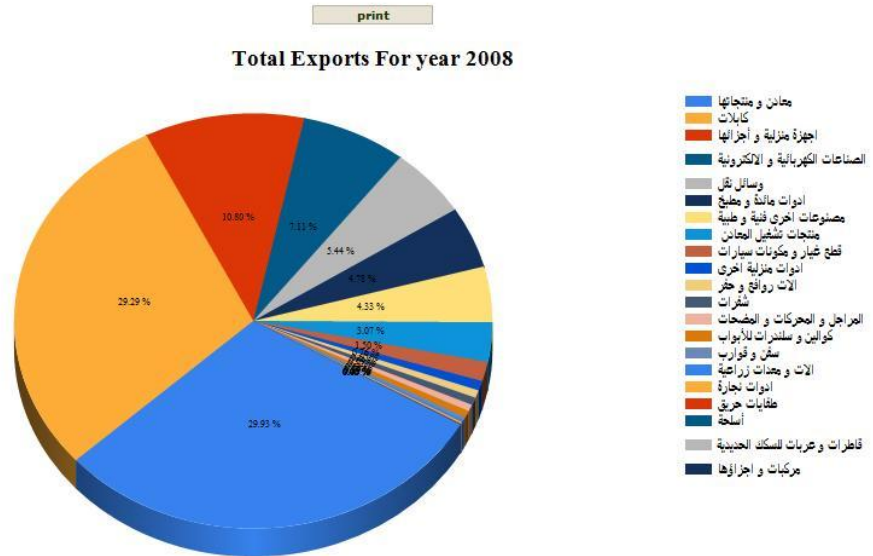
Navigation bar with: 1 of 1, 100%, Find | Next, Select a format, Export

Exports by sector for year 2008

Sector	Total Exports EGP	Percent of Total
Metalic Products	3860971562.19	29.94
Cables	3778030565.82	29.29
White Goods	1393244434.21	10.00
Electrical and Electronic Ind	917557428.73	7.11
Vehicle Industry	702048230.60	5.44
Tableware	616693838.17	4.78
Other Industries (Musical & Arts)	559284021.53	4.34
Metal Forming	395989101.29	3.07
Car Components	194288704.94	1.51
Home Appliances	98125925.75	0.76
Lifting and Drilling Machines	77572627.76	0.60
Blades	77294621.84	0.60
Pubms,Compressors and Generators	67710467.41	0.52
Locks	66876631.39	0.52

Also we will have a Chart View

Charts View



All these data depend on GOEIC data; therefore, sometimes after adding figures for certain Companies or data from the EDF, a slight variation could be found.

Important Sections through the Website:

Exporters Guide under Export Info, contains special market reports and very useful links for market survey or directories.

Export Opportunities under Export Info, contains all ECS Export Opportunities the Council receive which are also sent via our e-newsletter on monthly bases.

In becoming a member, under Membership, contains all Export Support Forms and Requirements for any new member who wants to join.

In the Media Center, all Press Releases related to the Engineering Industry Sector will be posted.

EEC-EG Website Map

